

NBP-150

Smart and Stable POS System

To satisfy service demands, retail and hospitality

industry require high-performance POS systems

with flexible mount installation options

to suit diverse application environments.

Modularized and removable design allows you to customize

your high-end POS system based on your need. Single

screen, dual screen and VFD display, etc.

We provide whatever you want.





Metal body, aluminum material, good for heating with strong anti-interference ability.



Easy to change customer display or 2nd screen without screwdriver.



Easy to install MSR, lbutton.



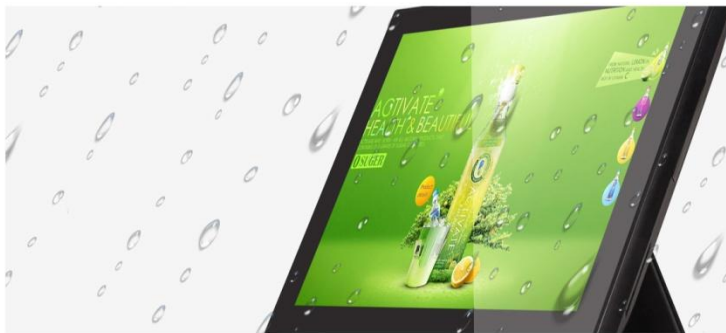
Easy to replace 2.5" hard disk without opening the whole machine.



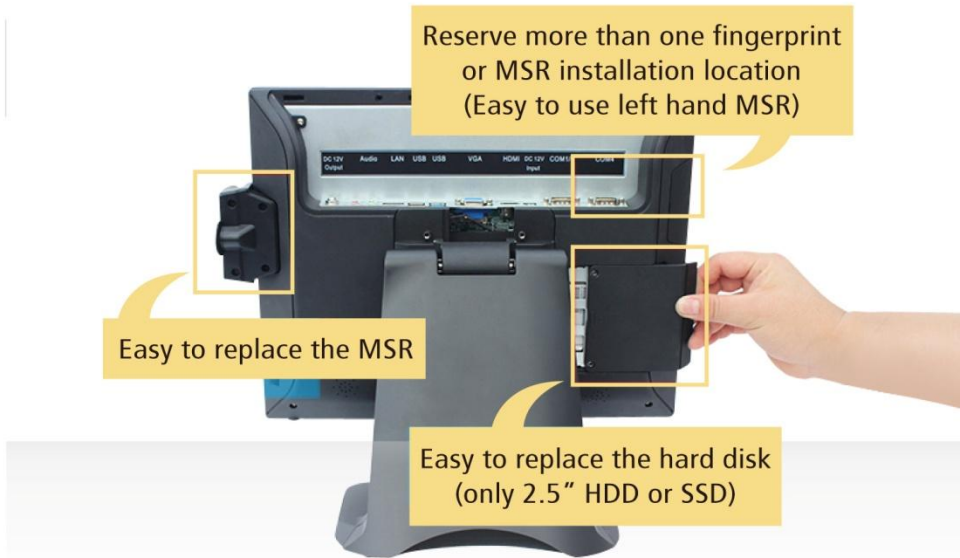
Light body, save rooms



Stand back cover can hide the wire



High standard of waterproof and dustproof (IP54)



Reserve more than one fingerprint or MSR installation location (Easy to use left hand MSR)

Easy to replace the MSR

Easy to replace the hard disk (only 2.5" HDD or SSD)

Retail



Every retail store needs to leverage outstanding experiences at touch-point to win customer loyalty.

Take advantage of the opportunity to big customers at POS system with SEWOO products. The latest POS system for its superior configurability, Scalability, and power.

Touch screen all-in-one machine greatly improves the grade level of the restaurant,

it can be said to be synonymus with the image of identitynd forecast



Specification

Rotate 180°

2*20 VFD or LCD customer monitor

MSR and RFID or I-Button

2*USB Port



CPU	
Intel J1900	Intel® Celeron® J1900, Quad Core, 2M Cache, 2.0Ghz
Intel i3	Intel® Core® i3-3217U , Dual Core, 3M Cache, 1.8Ghz
Intel i5	Intel® Core® i5-3337U , Dual Core, 3M Cache, 1.8Ghz
OS	
Supporting System	POSReady 7, Windows 10 IoT Enterprise
Main	
Memory	DDR3 4GB (up to 8GB)
Storage	2.5" SATA 500G HDD & 64G / 128G SSD
Primary Display	
LCD	15" TFT LED
Resolution	1024 x 768
Customer Display	VFD 220 Customer Display / LCD 2 line x 20 characters LED Display characters: Single line display Support 8 number only
Touch Screen	15" Bezel-Free True-Flat Protective Capacitive Touch Screen
Secondary Display	12.1" LCD, 15" LCD
Interface	
Intel J1900	VGA (1), RS232 (2), RJ45 (1), USB (6), RJ11 (1)
Intel i3 / i5	VGA (1), HDMI (1) RS232 (2), RJ45 (1), USB (6)
Audio	1 * Mic-in, 1 * Line-out
Power	
DC-IN	Input AC 100~240V / 50~60hz, Output DC 12V / 5A
Environment	
Temperature	Operating 0~40°, Storage -20°~60°
Dimension	420mm x 270mm x 400mm
Size	
Weight	7kg
Optional	
MSR	ISO 1, 2, 3 Tracks
iButton	Dallas Key RS232 I/F
Finger Reader	
Reliability	
Certifications	CE, RoHS

※ Specifications are subject to change without prior notice



MOBILE PRINTER



POS PRINTER



LABEL PRINTER



SMART DEVICE

J.STEPHEN Co., Ltd.

<http://www.miniprinter.com>

28-6, Gajangsaneopdong-ro, Osan-si, Gyeonggi-do, 18103, Republic of Korea
TEL : +82-31-8077-5000 / FAX : +82-31-459-8880