



FM3080 Hind
stationary scanners

Features

Snappy on-screen barcode capture.

The FM3080 Hind is Armed with Newland's sixth-generation of UIMG® technology. This CPU-based scanner excels at reading on-screen barcodes that contain a large amount of data.

Instant visual feedback.

With up to 4 color options available, the white scanning window of the FM3080 Hind can light up each scan. It can be programmed for different barcodes, a successful read, or to match your company brand.

Small form factor.

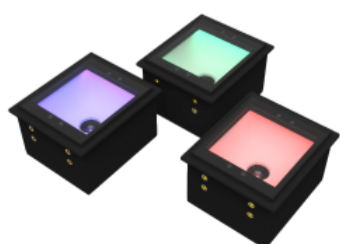
Dimensions of 78.7 x 67.7 x 47.5mm make the FM3080 Hind the smallest of their FM30 series. As a result, it takes up minimal space in a kiosk or at the POS.

IR and light sensors.

In order to achieve higher productivity, the FM3080 Hind has a combination of an IR sensor and light sensor. This combination creates improved sensitivity in activating the scanner to scan the presented barcode.

IP65 sealing.

The FM3080 Hind possesses a high IP-rating of IP65, making it resistant to water and dust.



Application Scenarios



access control



mobile
payment



self service



transportation

FM3080 Hind technical specifications

Performance	Image Sensor	800x800 CMOS
	Illumination	White LED
	Minimal Print Contrast	25%
	Scan Angle Roll	360°
	Scan Angle Pitch	±40°
	Scan Angle Skew	±40°
	Field of View Horizontal	74°
	Field of View Vertical	74°
	Scan Modes	Sense Mode, Continuous Mode
	Scan Window	50mm x 50mm
Data capture	1D	EAN-8, EAN-13, UPC-A, UPC-E, ISSN, ISBN, Codabar, Standard 2 of 5, Code 128, Code93, ITF-6, ITF-14, GS1 Databar, MSI-Plessey, Code 39, Interleaved 2 of 5, Industrial 2 of 5, Matrix 2 of 5, Code 11, Plessey, etc.
	2D	PDF417, Data Matrix, QR Code, Micro QR Code, Aztec, etc.
Physical	Dimensions (mm)	78.7(W)x67.7(D)x47.5(H)mm
	Weight	132g
	Interfaces	RS-232, USB
	Notifications	Beep, LED indicator
	Input Voltage	5VDC±5%
	Current @ 5VDC Operating	185mA (typical), 193mA (max.)
	Power Consumption	869mW (typical)
Environmental	Operating Temperature	-20°C to 60°C (-4°F to 140°F)
	Storage Temperature	-40°C to 70°C (-40°F to 158°F)
	Humidity	5% to 95% (non-condensing)
	Electro Static Discharge (ESD)	±15 kV (air discharge), ±8 kV (direct discharge)
	Sealing	IP65
Certifications	Certifications	FCC Part15 Class B, CE EMC Class B