

Thermal Printer Mechanism

LTP02



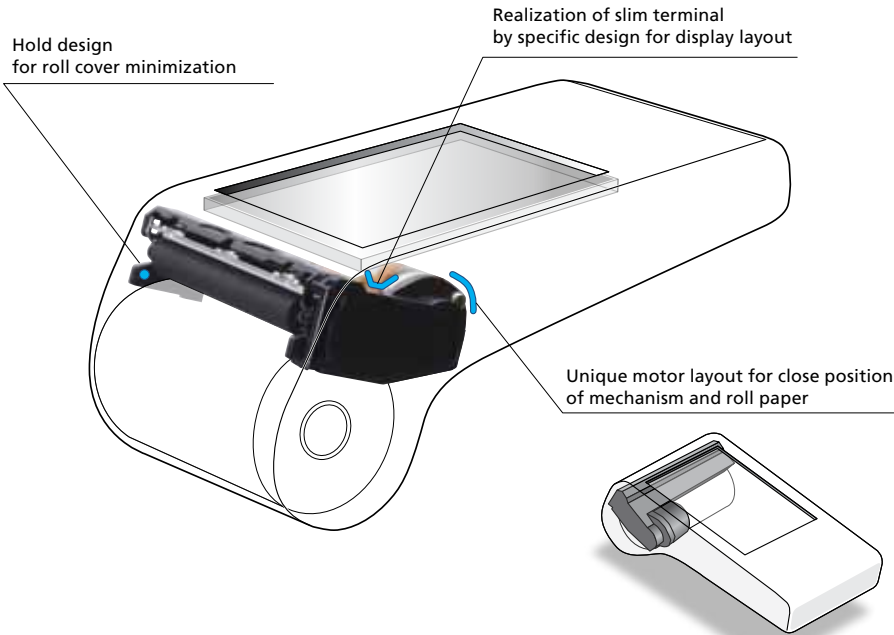
LTP02-245

- Max. printing speed: 90mm/sec
- Extremely compact design for mobile terminal
- Light weight only 28g

| Model | | LTP02-245 |
|----------------------------|--------------------------|--------------------------------|
| Printing | Method | Thermal line dot printing |
| | Number of dots/line | 384 |
| | Resolution (dots/mm) | 8 |
| | Paper width (mm) | 58 ⁺⁰ ₋₁ |
| | Printing width (mm) | 48 |
| | Speed (mm/sec)max | 90 |
| | Paper path | Curved |
| Detection | Head temperature | By thermistor |
| | Out of paper | By photo interrupter |
| Power supply (V) | Operation voltage (Vdd) | 3.0 to 3.6 |
| | Operation voltage (Vp) | 5.5 to 8.0 |
| Peak current (A) | Head | 2.23(8.0V / 45 dots) |
| | Motor | 0.6 |
| Service life | Pulse activation (pulse) | 100 million |
| | Abrasion resistance (km) | 50 *1 |
| Operating temperature (°C) | | -10 to 50 |
| Dimensions (W x D x H mm) | | 67.3 x 18.1 x 30.0 *2 |
| Mass (g) | | Approx.28 |

*1 Use recommended thermal papers *2 Excluding protrusion

Smart design for terminal minimization !



Specifications are subject to change without notice.



Seiko Instruments GmbH
 Siemensstraße 9
 D-63263 Neu-Isenburg, Germany
 Phone +49 6102 297 100
 Fax +49 6102 297 50 100
 info@seiko-instruments.de
 www.seiko-instruments.de

