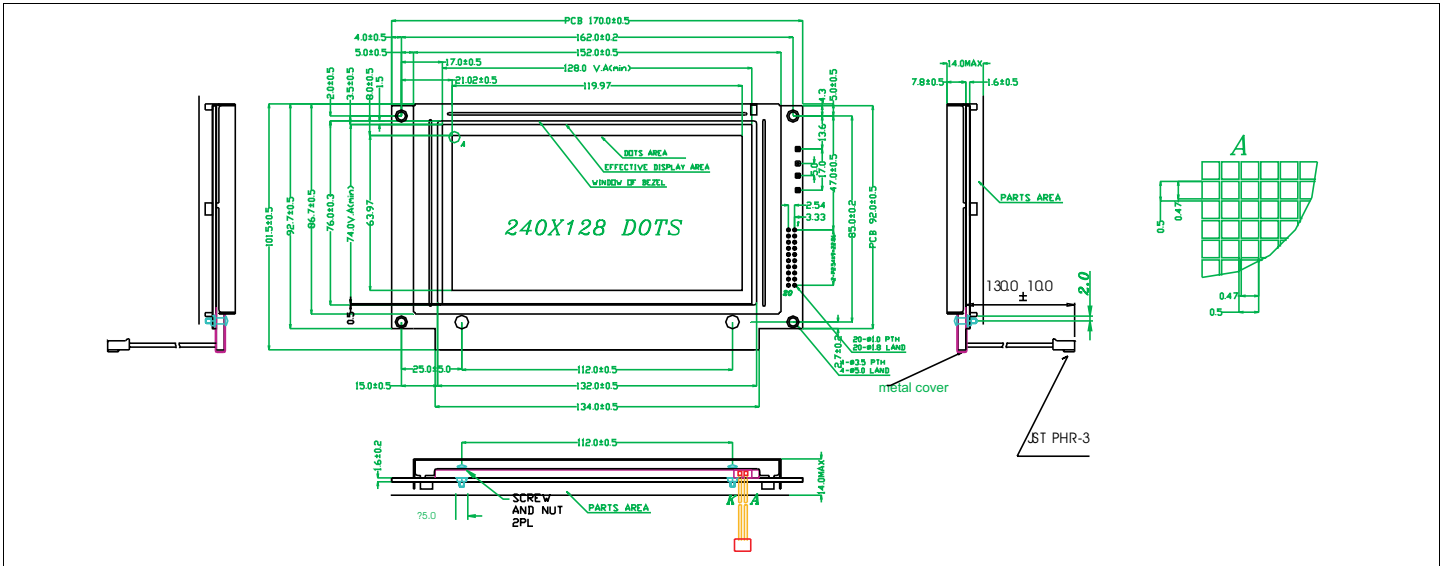


HDM128GS24L-1

Dimensional Drawing

240 X 128 Dots Graphic White LED Backlight



Features

- Backlight.....White LED
- Extended Temperature
- Built-in Controller.....T6963
- Touch screen.....none

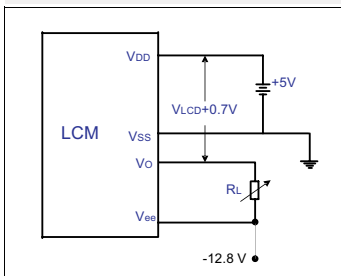
Physical Data

- Module Size.....170.0W x 101.5H x 14.0 mm
- Viewing Area Size.....128.0W x 74.0H mm
- Dot Pitch.....0.50W x 0.50H mm
- Dot Size.....0.47W x 0.47H mm
- Weight.....224g

Electrical Characteristics (VDD=5.0±0.25V 25°C)

| PARAMETER | SYM | CONDITION | MIN | TYP | MAX | UNIT |
|---------------------|-----------------|------------------------|------------|-------|-----|------|
| SUPPLY VOLTAGE | V _{DD} | - | 4.5 | 5.0 | 5.5 | V |
| | V _{EE} | - | - | -12.8 | - | V |
| LED FORWARD VOLTAGE | V _{AK} | I _{AK} =240mA | 2.9 | 3.2 | 3.5 | V |
| LED FORWARD CURRENT | I _{AK} | V _{AK} =3.2V | - | 240 | - | mA |
| DRIVE METHOD | | | 1/240 DUTY | | | |

Power Supply



Absolute Maximum Ratings

| PARAMETER | SYMBOL | MIN | MAX | UNIT |
|-----------------------|------------------|-----|----------------------|------|
| SUPPLY VOLTAGE | V _{DD} | 0 | 7.0 | V |
| INPUT VOLTAGE | V _{IN} | - | V _{DD} +0.3 | V |
| OPERATING TEMPERATURE | T _{OP} | -20 | +70 | °C |
| STORAGE TEMPERATURE | T _{STG} | -30 | +85 | °C |

Pin Connections

| PIN NO. | SYMBOL | LEVEL | FUNCTION |
|-----------------------|--------|-------|-----------------------------|
| DATA CONNECTOR | | | |
| 1 | FG | GND | FRAME GROUND (0V) |
| 2 | VSS | GND | GROUND (0V) |
| 3 | VDD | +5V | POWER SUPPLY |
| 4 | VL | - | POWER SUPPLY FOR LCD DRIVER |
| 5 | WR | L | WRITE SIGNAL |
| 6 | RD | L | READ SIGNAL |
| 7 | CE | L | CHIP ENABLE INPUT |
| 8 | C/D | L/H | H INSTRUCTION CODE, L DATA |
| 9 | NC | - | NO CONNECTION |
| 10 | RESET | L | RESET SIGNAL |
| 11 | Db0 | H/L | Display Data |
| 12 | Db1 | | |
| 13 | Db2 | | |
| 14 | Db3 | | |
| 15 | Db4 | | |
| 16 | Db5 | | |
| 17 | Db6 | | |
| 18 | Db7 | | |
| 19 | FS1 | L/H | FONT SELECT |
| 20 | RV | L/H | NORMAL / REVERSE DISPLAY |